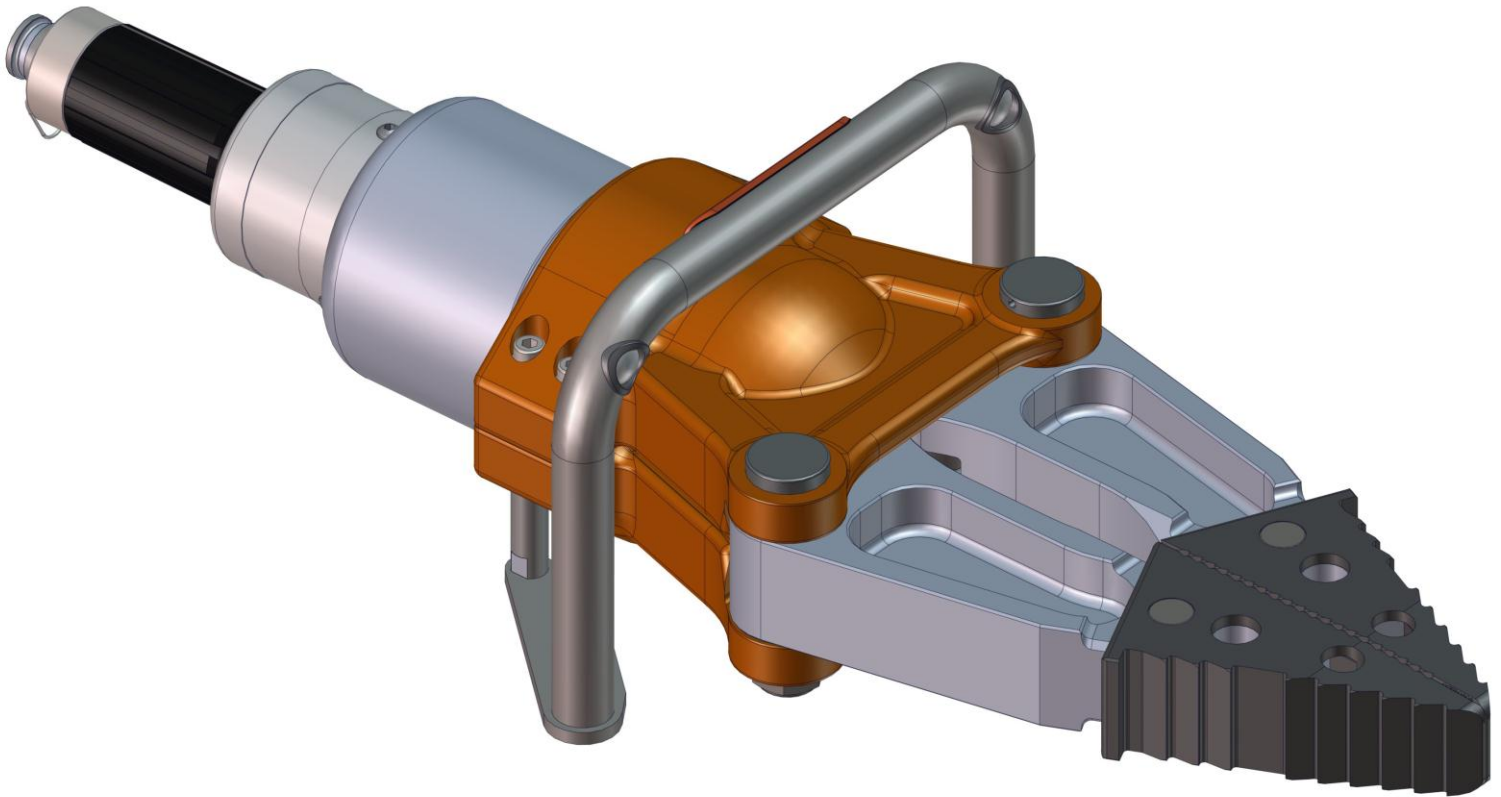
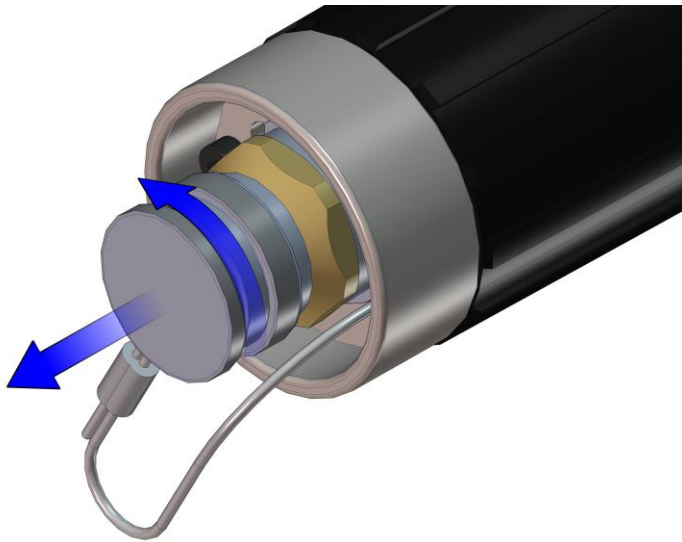


Holmatro 4240 Spreader

Maintenance Manual

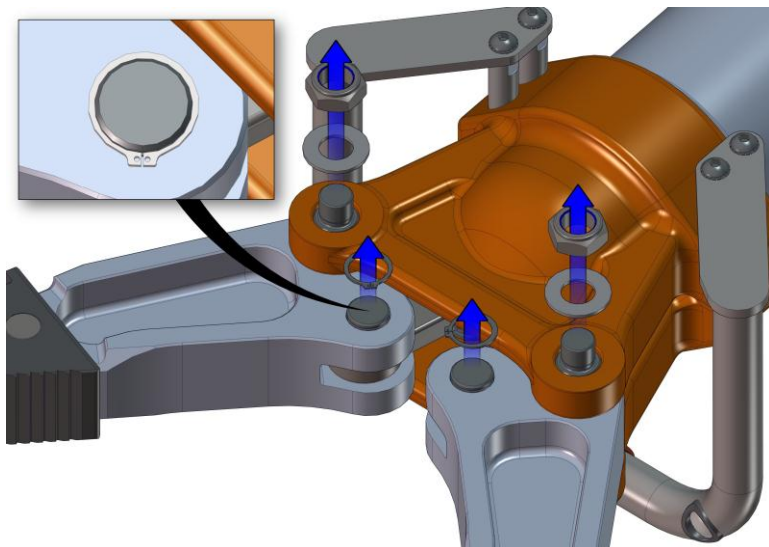
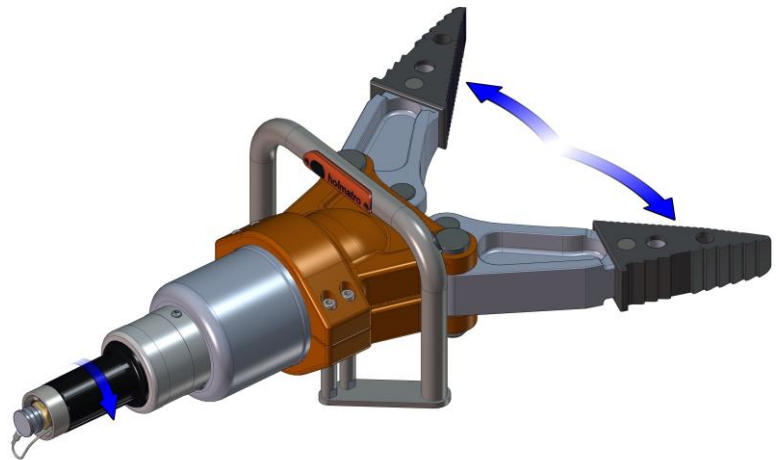


Jaws Removal & Replacement



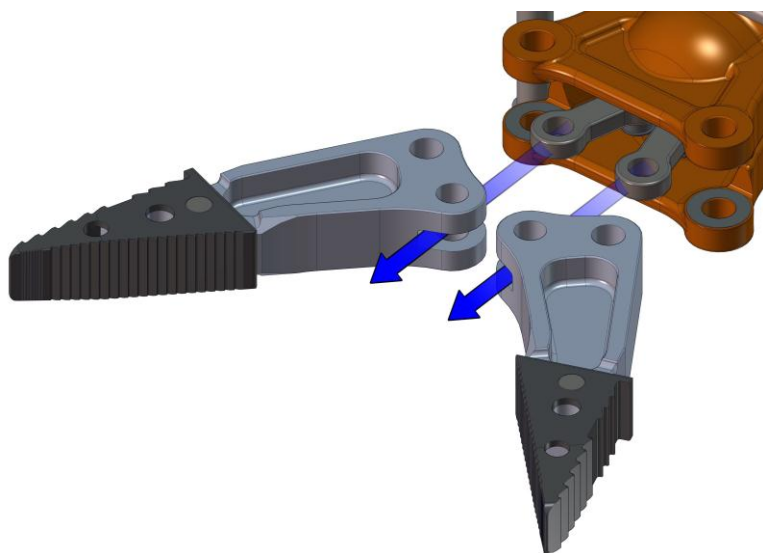
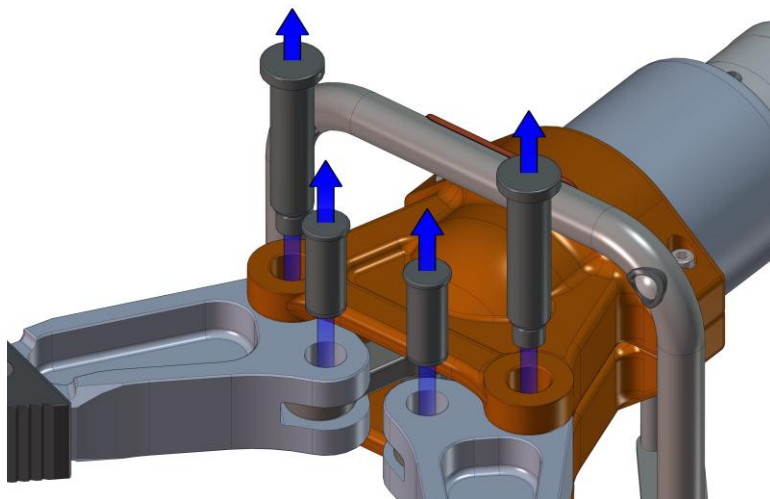
1. To remove the Jaws from the Holmatro 4240 Spreader, you must first relieve all pressure from the system by removing the CORE connection plug from the back of the Spreader unit. Make sure there is no excess oil in the system prior to removing the Jaws.

2. Spread the Jaws of the Spreader unit by first turning the Control Handle to the full right position. This will open the internal valve allowing the Jaws to be spread by hand manually. Once in position, release the Control Handle to lock the Jaws in place. This will keep the Arms from moving during maintenance.



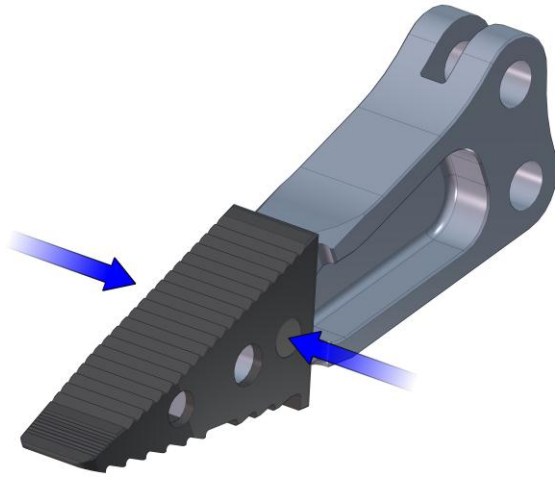
3. Flip the Spreader Assembly over onto its “back” side revealing the Jaw Pivot retaining clips and nuts on the bottom of the Spreader Assembly. Remove the retaining clips using a pair of needle nosed pliers or clip removal tools. Remove the nuts attached to the main pivot pin using a 15mm socket.

- 4.** Flip the Spreader over onto its “front” side. Remove the (4) pins from the top side. Check each pin for excessive wearing or scratches, replacing where necessary. Place all components in a safe location for re-use during re-assembly.



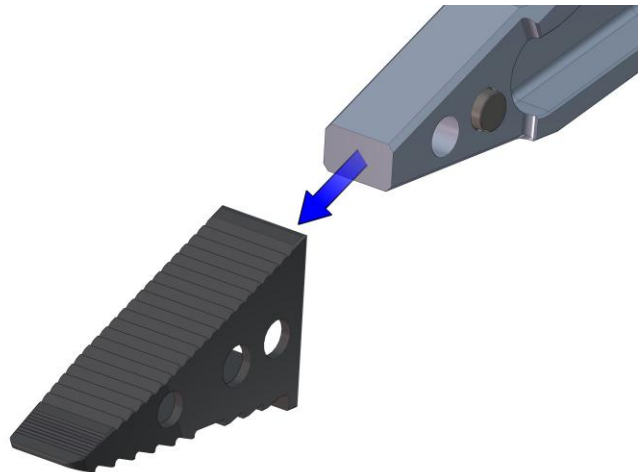
- 5.** The Jaws can now be pulled from the Spreader assembly. Be sure to check the (2) pin holes on both Jaw assemblies as well for excessive wearing or scratches, replacing where necessary. For re-assembly, follow the steps in the reverse order. Apply grease on all (4) of the pins before re-inserting into the Spreader Jaws. This will help ensure longevity to your Holmatro 4240 Spreader Assembly.

Servicing the Jaw Tips & Arms



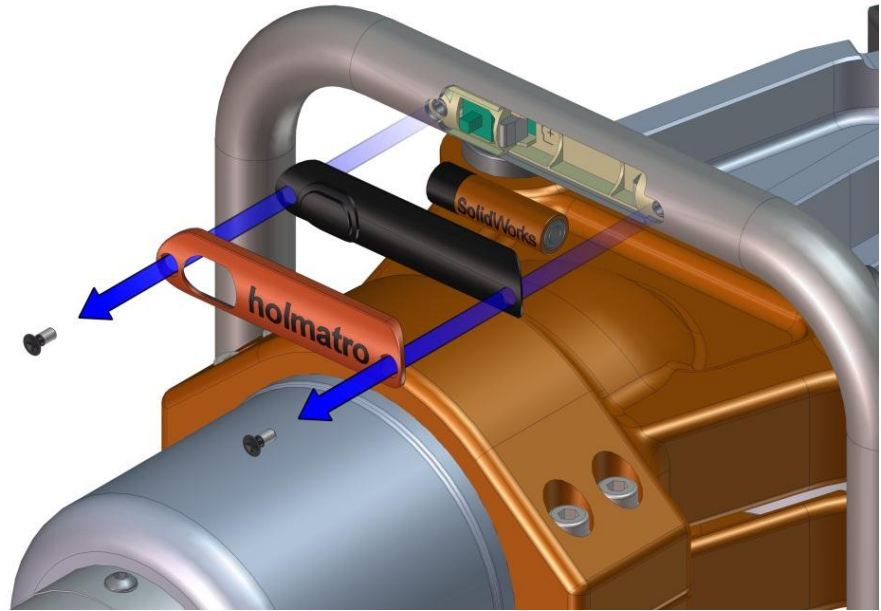
1. The Jaws of the Holmatro 4240 Spreader can be serviced while attached to the Spreader Assembly. However, if extensive service is required, it is recommended to remove them using the procedures discribed above for removing the Jaws from the Spreader assembly.

2. To remove the replaceable “Tips” from the Jaw Arm Assembly, depress both detent buttons found on both sides of the Jaw Tip as shown to the right. Then pull the Tip off from the Arm as shown.



Overhead Light and Battery Replacement & Service

1. To replace the batteries that operate the optional overhead lighting system, first remove the screws from the cover, being careful not to strip the threads. Next, remove the cover and gasket from the handle. The gasket may stick to the handle. If this is the case, pull the gasket from one edge and



“peel” the gasket off from the handle. It should not rip or tear. Remove the battery from the internal housing and replace as necessary. Make sure to check for excessive corrosion on the battery terminal contacts inside of the handle.